



POVERTY IN THE NORTHWEST

Interest Group, North Pacific Yearly
Meeting, 17 July 2020

Opening worship

OUTLINE

Opening worship

A few questions on your experience

Playing Spent

What is poverty? Where is poverty?

Experience of poverty

What can Quakers do?

- American Friends Service Committee
- Friends Committee on National Legislation
- Quaker Voice on Washington Public Policy
- Your ideas

Closing worship

QUESTIONS FOR YOU

- 1) Have you ever gone hungry for a day because you did not have enough money for food?
- 2) Have you ever been evicted?
- 3) Have you ever been homeless?

PLAY SPENT

playspent.org

If you did not make it to the second month's rent, what happened?

Those who did: were you in debt? Did you get enough to eat during the month?

What would you want to change in the situation to make it more likely that you could make it in the second month?

SOME OF OUR NUMBERS ...

Portland --

Minimum wage: \$12.50/hour; state min wage \$11.25 per hour

Average commute time: 26.1 minutes

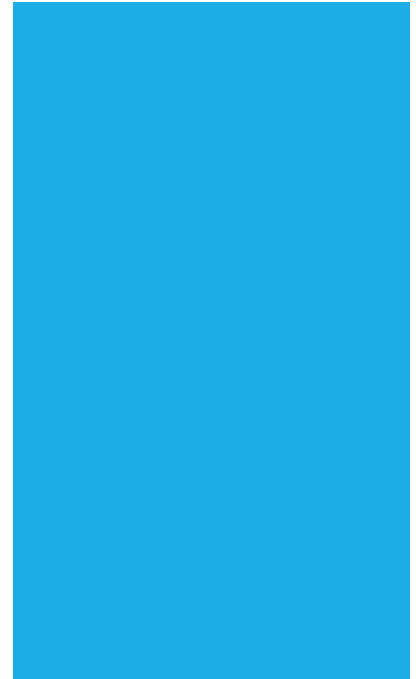
Rental housing costs: median 2017 \$1238

Seattle –

Minimum wage: city \$16.39 for large employers; \$15.75 for smaller employers with no benefits; \$13.50 if employer pays \$2.25/hr for medical benefits; state min wage \$13.50/ hour

Average commute time: 26.2 minutes

Rental housing costs: median 2017 \$1443 (Seattle-Tacoma-Bellevue)



POVERTY

World Bank poverty levels:

- \$1.90 per capita per day (10 percent of world population in 2015)
- Based on measure of well-being; income, food, place, medicine; consumption and income; data come from country surveys
- Poverty = not enough to support good quality of life
- Extreme poverty = less than minimum food consumption to sustain life

Official U.S. federal poverty level (FPL):

- *Cost needed by average person per year to cover basic necessities like food, utilities, and housing.*
 - \$12,760 for individuals
 - \$17,240 for a family of 2
 - \$21,720 for a family of 3
 - \$26,200 for a family of 4

Do these qualify you for help?

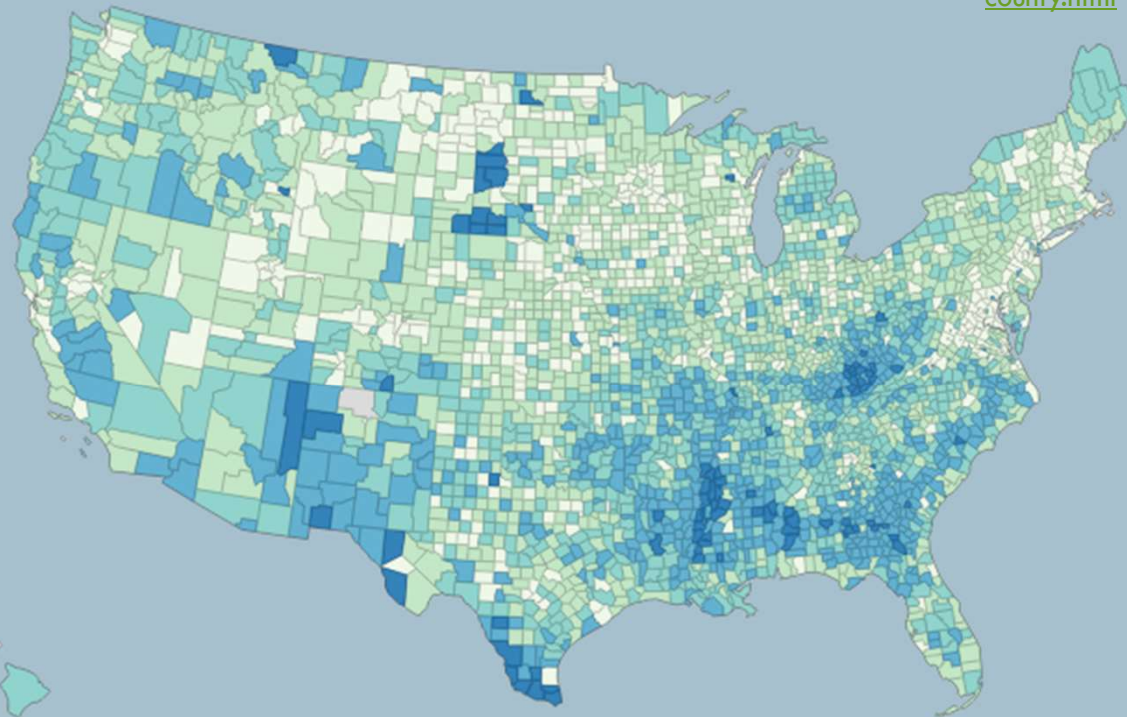
- Medicaid and premium help for health insurance
- Children's Health Insurance Program
- Food stamps (SNAP) and National School Lunch Program

Supplemental federal poverty definition:

- *Based on expenditures on food, clothing, shelter, and utilities (FCSU); varies by family size and geographic adjustments for housing costs; resource measures more complicated*

2014-2018 Poverty Rate in the United States by County

<https://www.census.gov/library/visualizations/interactive/2014-2018-poverty-rate-by-county.html>



Percentage of people in poverty

- 30.0% or higher
- 20.0% to 29.9%
- 15.0% to 19.9%
- 10.0% to 14.9%
- Less than 10.0%
- Data not available

U.S. percentage is 14.1.

POVERTY THE U.S.

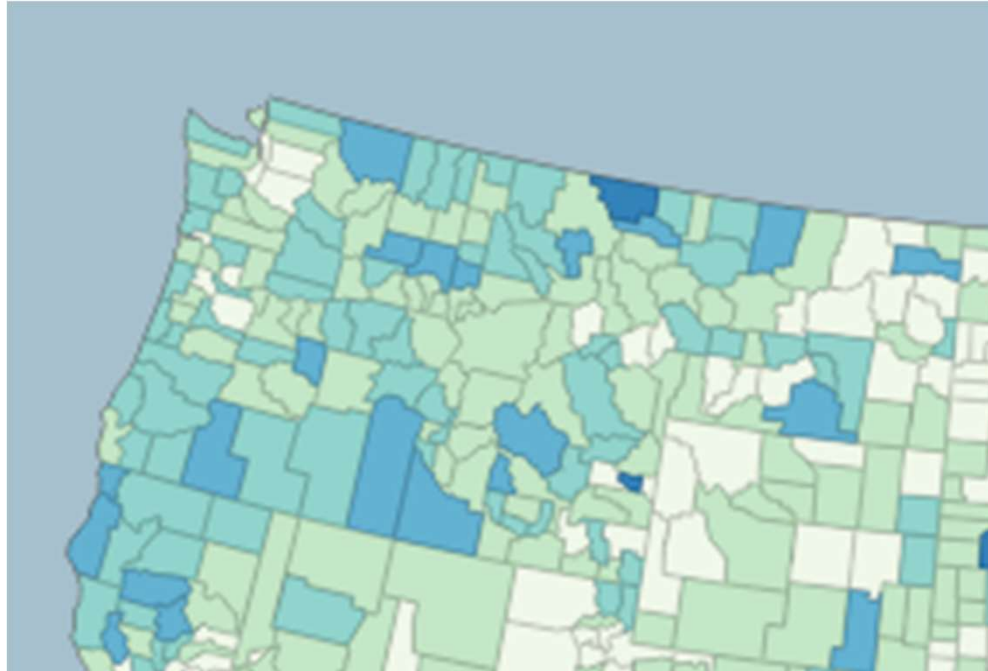
United States[®]
Census
Bureau

U.S. Department of Commerce
U.S. CENSUS BUREAU
census.gov

© Mapbox © OSM

Source: 2014-2018 American Community Survey, 5-Year Estimates

POVERTY IN THE NORTHWEST



To check your county, go to ...

<https://www.census.gov/library/visualizations/interactive/2014-2018-poverty-rate-by-county.html>

Percentage of people in poverty

- 30.0% or higher
- 20.0% to 29.9%
- 15.0% to 19.9%
- 10.0% to 14.9%
- Less than 10.0%
- Data not available

U.S. percentage is 14.1

See examples of specific towns at
<http://www.msnbc.com/interactives/geography-of-poverty/index.html>

HUNGER



Overall food insecurity

	2018	Projected 2020
Idaho	10.8%	16.2%
Montana	10.3%	16.0%
Oregon	11.9%	17.2%
Washington	10.7%	15.9%

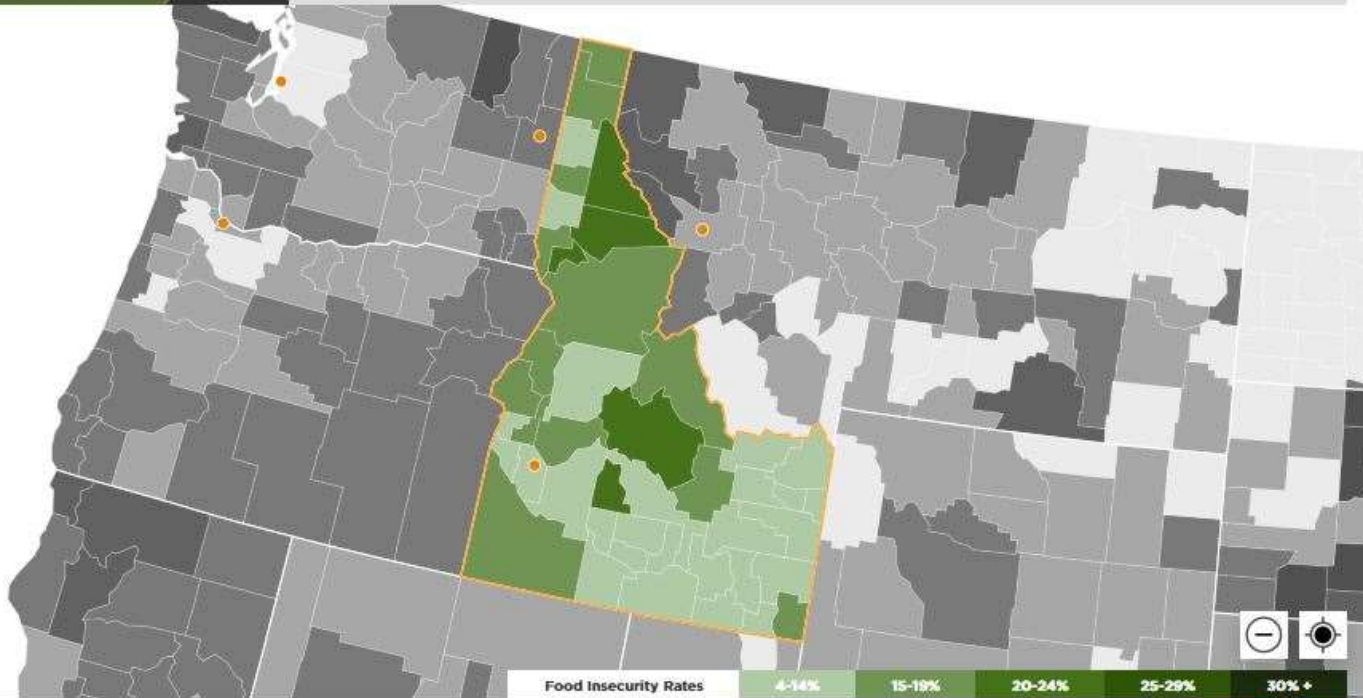
Child food insecurity

	2018	Projected 2020
Idaho	12.6%	22.1%
Montana	15.9%	26.1%
Oregon	16.0%	25.4%
Washington	14.7%	24.0%

Food insecurity = lack sufficient quantity of affordable, nutritious food
Data is from feedingamerica.org

The United States

Idaho



2018 Child County Food Insecurity in Idaho



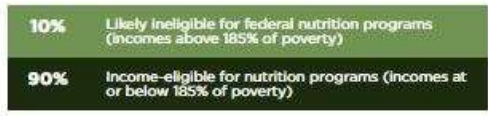
FOOD INSECURE CHILDREN IN IDAHO

FOOD INSECURITY RATE IN IDAHO (OVERALL)

FOOD INSECURITY RATE IN IDAHO (CHILD)

ESTIMATED PROGRAM ELIGIBILITY AMONG FOOD INSECURE CHILDREN IN IDAHO

56,120



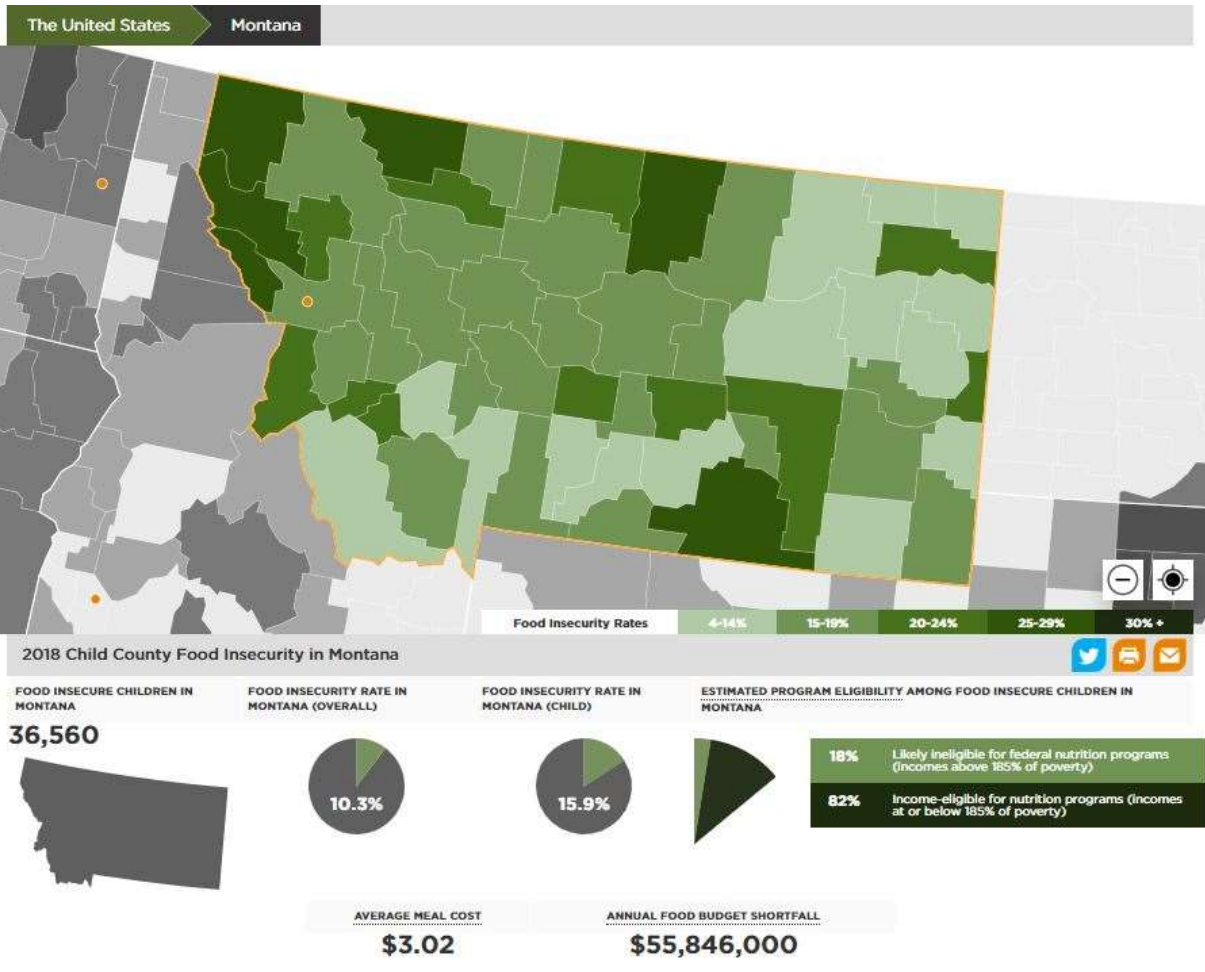
AVERAGE MEAL COST

\$3.04

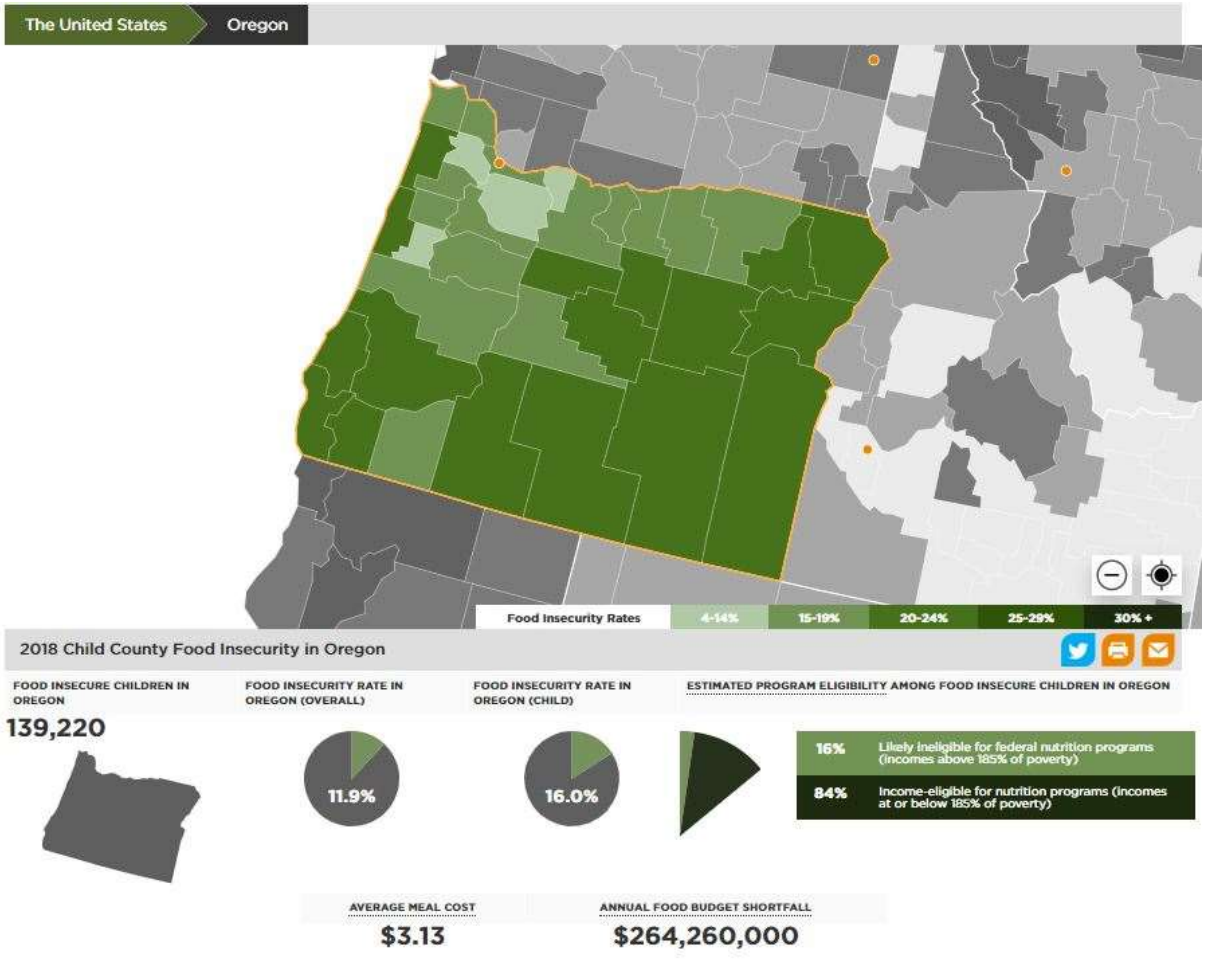
ANNUAL FOOD BUDGET SHORTFALL

\$97,790,000

Source: feedingamerica.org



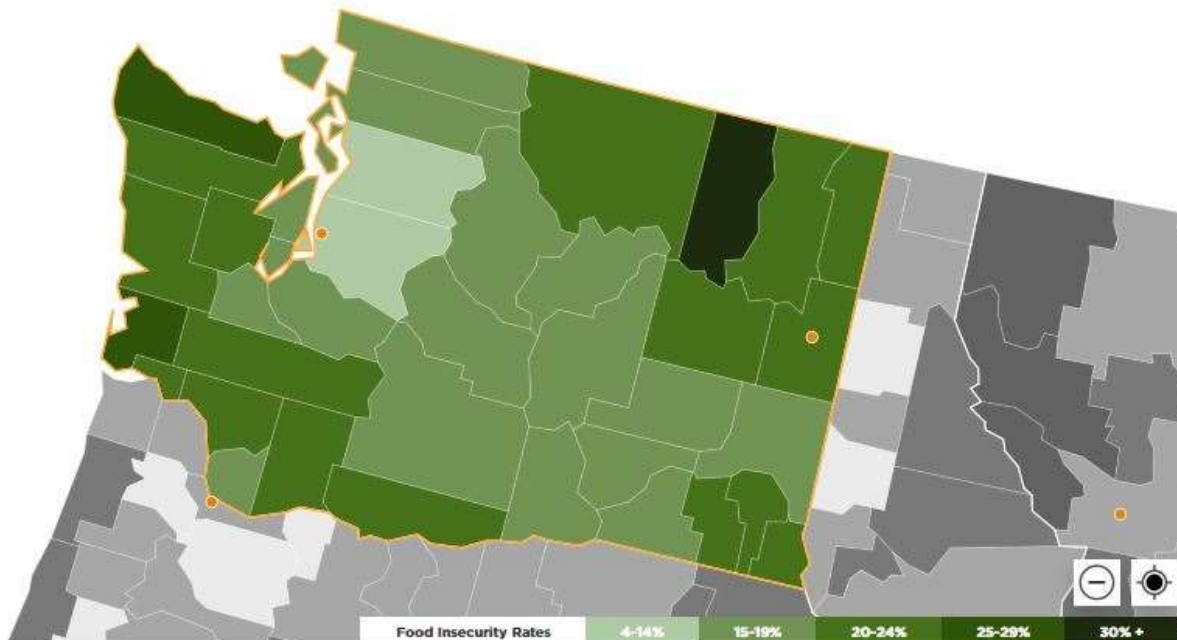
Source: feedingamerica.org



Source: feedingamerica.org

The United States

Washington



2018 Child County Food Insecurity in Washington



FOOD INSECURE CHILDREN IN WASHINGTON

244,480

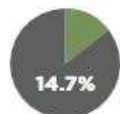


FOOD INSECURITY RATE IN WASHINGTON (OVERALL)



10.7%

FOOD INSECURITY RATE IN WASHINGTON (CHILD)



14.7%

ESTIMATED PROGRAM ELIGIBILITY AMONG FOOD INSECURE CHILDREN IN WASHINGTON



- 33% Likely ineligible for federal nutrition programs (Incomes above 185% of poverty)
- 67% Income-eligible for nutrition programs (Incomes at or below 185% of poverty)

AVERAGE MEAL COST

\$3.22

ANNUAL FOOD BUDGET SHORTFALL

\$438,026,000

Source: feedingamerica.org

EVICTED

Who gets evicted:

- Owe only \$500 in unpaid rent in Texas, \$300 in North Carolina
- Less likely to be deep in debt, more likely to be less than a month in arrear

What is the damage:

- Lose possessions
- Lose jobs
- Physical and mental health problems
- Children miss school and fall behind
- Have trouble renting again

In COVID crisis,

- Only 28% of properties covered by federal moratorium
- Many states have moratoria, but no provision for when the moratorium ends
- 20-28 million expected between now and September

Reading:

[Evicted: Poverty and Profit in the American City](#) by Matthew Desmond

Source: <https://thestacker.com/stories/4233/eviction-rates-every-state>

Current expectation reported in <https://www.cnn.com/2020/07/10/looming-evictions-may-soon-make-28-million-homeless-expert-says.html?qsearchterm=evictions>

Idaho
1107 (.61%)

Montana
1249 (.86%)

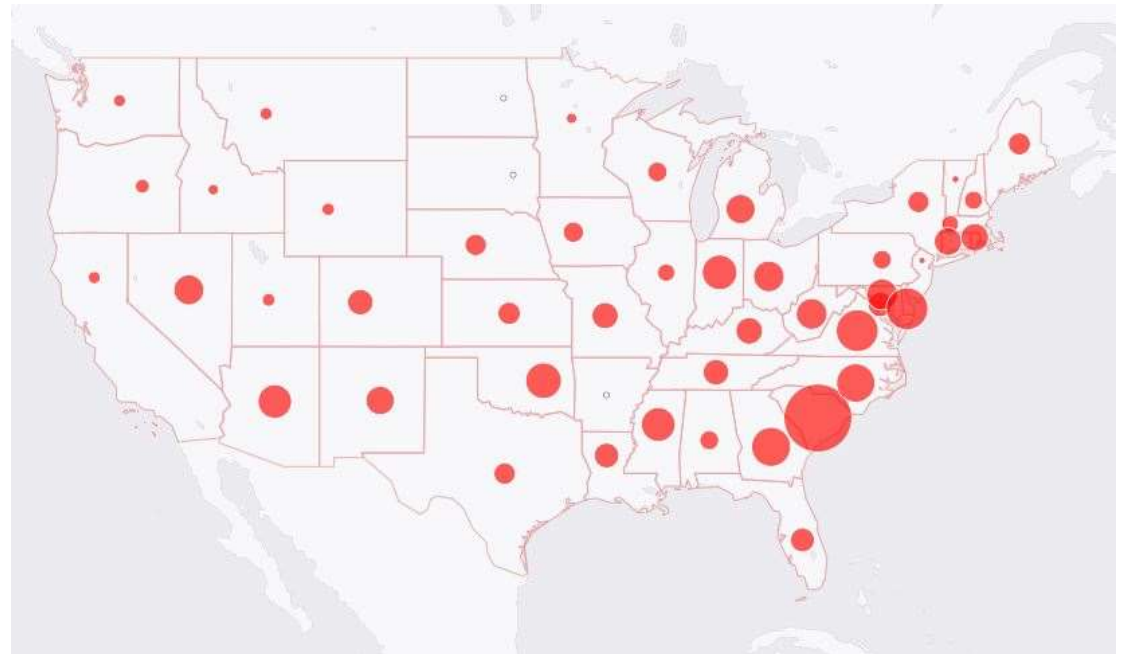
Oregon
7038 (1.1%)

Washington
7904 (.82%)



EVICTIION RATES ACROSS THE U.S. 2016

Number of evictions and filings by
the number of renter-occupied
households in the state



<https://evictionlab.org/map/#/2016?geography=states&type=er>

HOMELESSNESS

Causes

When housing is out of reach

Low income

Health problems

Escaping violence

Racial inequality

Who experiences homelessness

Single adults

Children and families

Veterans

Physical and mental health problems

Young and homeless



From National Alliance to End Homelessness, 2019

Idaho

2315
13 per 10,000

Montana

1357
13 per 10,000

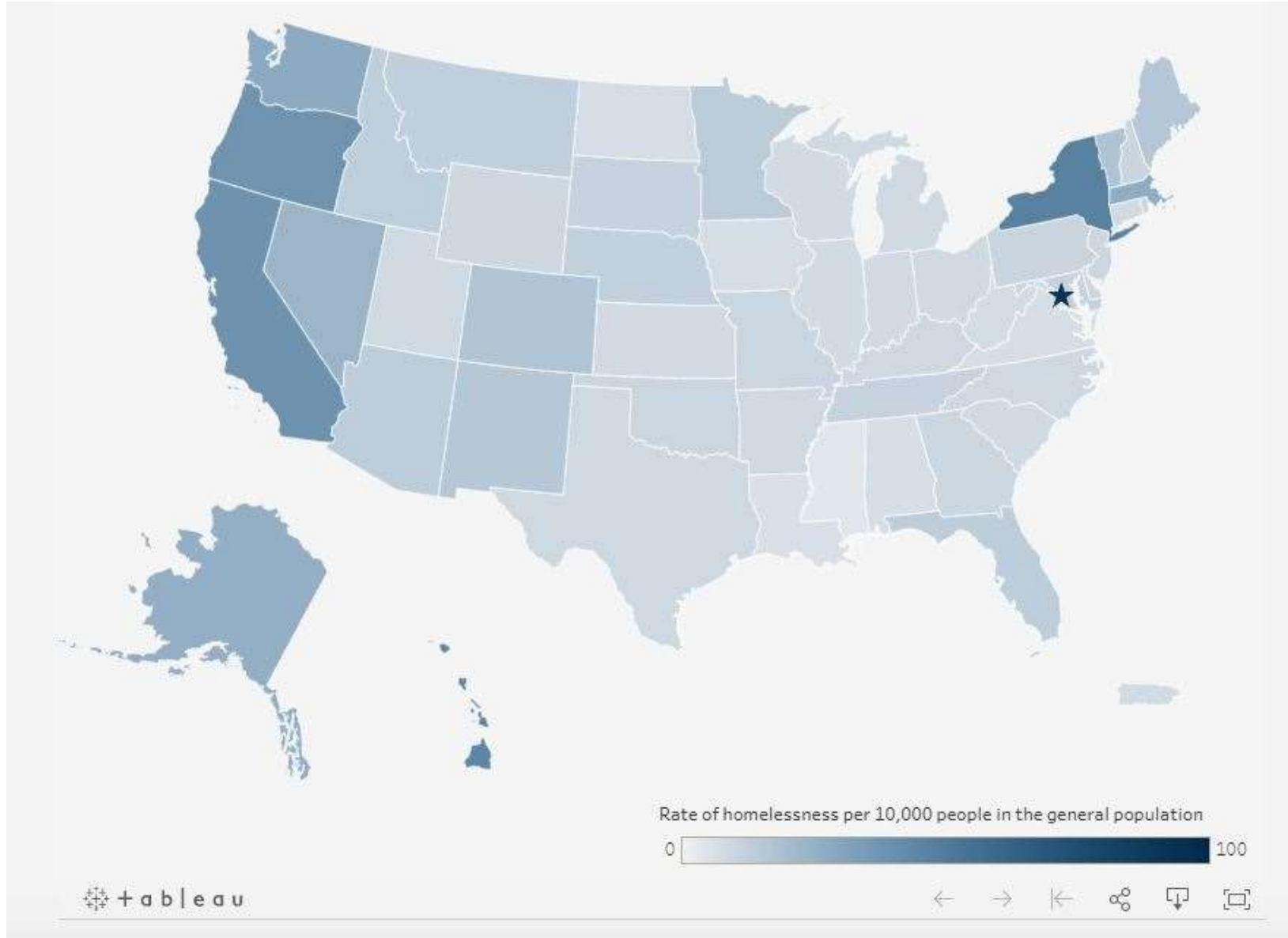
Oregon

15,876
38 per 10,000

Washington

21,577
29 per 10,000

<https://endhomelessness.org/>



GOING TO SCHOOL POOR

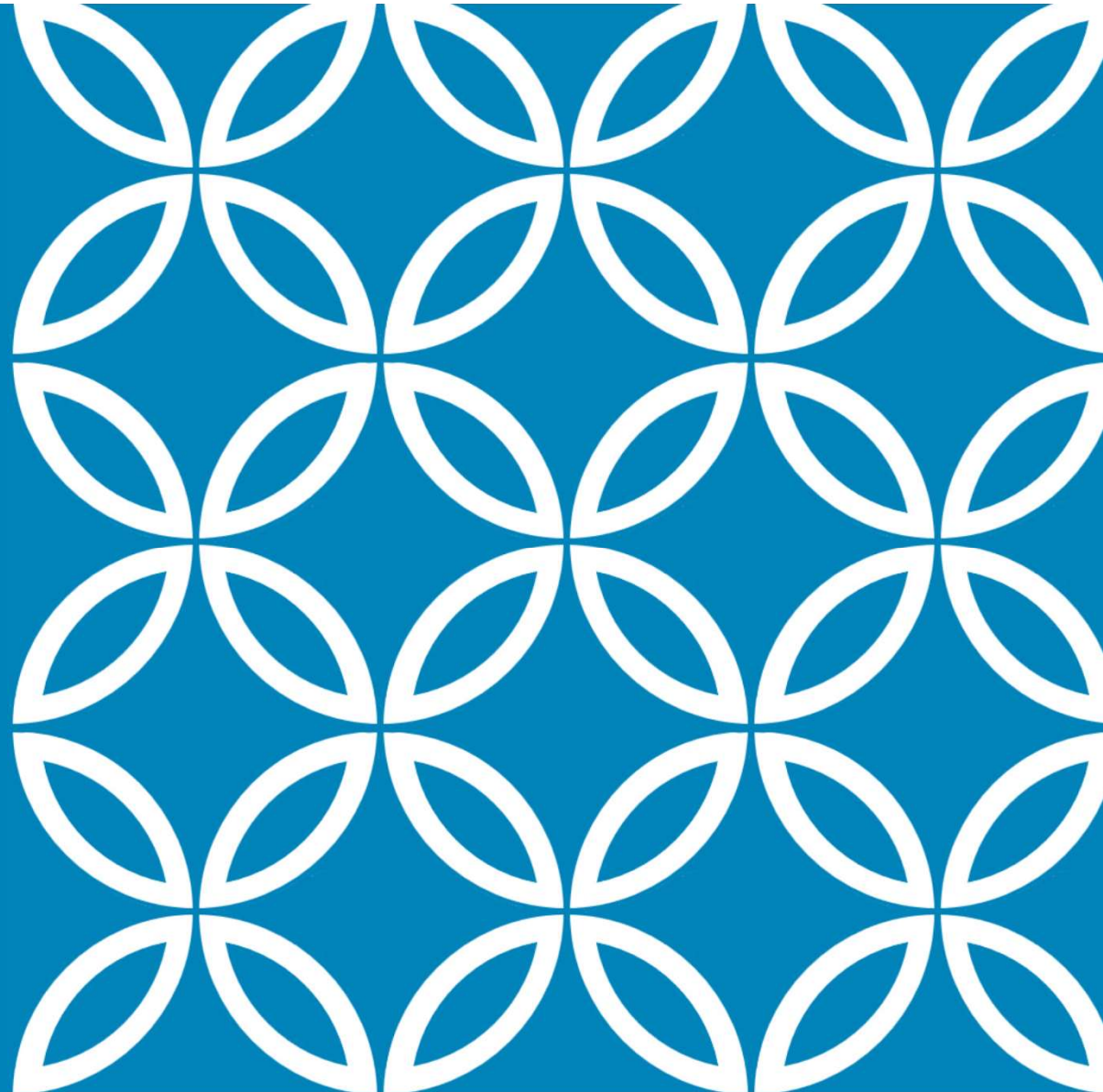
Children from low-income, poverty-stricken neighborhoods are behind from the start.

- No warm clothes
- No one at home
- Hungry
- Can't focus
- Homeless
- Lack of sleep
- Stress

Linked to brain development, working memory, attentional control

Source: American Federation of Teachers

<https://www.aft.org/periodical/osra-reporter/winter-2014/when-poverty-comes-school>



Home [Economic Services Administration](#) > Community Services Office > How to apply for services

ESA

Community Services Office

- Calendar
- What is "Verification"
- ▶ Community Services Office
- ▶ Services We Offer
- ▶ Eligibility for DSHS Services
 - [How to apply for services](#)
 - Other Helpful Resources
 - EBT and EFT Make Getting Benefits Easier
 - Mobile Community Services Office

Community Partnership Program

Division of Child Support

Manuals

Office of Refugee and Immigrant Assistance

Employment and Training Programs

Reports and Publications

Contact ESA

Disability Determination Services

How to apply for services

You can get the application at your local Community Services Office (CSO), or you can call and ask that an application be sent to you.

You may complete an **on-line application** by using the WashingtonConnection.org web site.

On WashingtonConnection.org you can:

- Start a new application.
- Report a change, such as address, income or family situation.
- Submit an eligibility review for continuing benefits.
- Ask "Do I Qualify?" or "Am I Eligible?"

Do you need to **print the application**? A printable version of the application is available in English and several other languages.

Turn in your application.

You can get the application at your local Community Services Office (CSO), or you can call and ask that an application be sent to you.

You may complete an **on-line application** by clicking here. Use the on-line application to:

- Start a new application.
- Report a change.
- Submit an eligibility review.

Do you need to **print the application**? A printable version of the application is available in English and several other languages.

Have an interview.

Some programs don't require an interview; others do. At the end of your interview you will be told whether or not additional information, or verification, is needed to make a decision on your case. If more information is needed, we will always request it in writing.

Submit requested information.

You can mail us requested information to our office. *Please do not turn in original documents.* If you bring items to our office, you can request a receipt.

If you needed income, food, or housing support right now, how would you apply for it?

Toppenish Community Services Office

4 E 3rd Ave

Toppenish, WA 98948

[Get directions](#)

Contact Us

Primary Phone: (877) 501-2233
TTY: (800) 833-6384
Fax: (888) 338-7410

Service Hours:

Location Services:

DSHS offices are closed to the public in response to Governor Inslee's Stay Home, Stay Health directive and in a continued effort to curb the spread of COVID-19. These closures will remain in place until further notice.

- Apply for services online at washingtonconnection.org or call 877-501-2233
- Apply or modify child support services, or call the KIDS line number 1-800-442-KIDS (5437)

BUREAUCRACY

AMERICAN FRIENDS SERVICE COMMITTEE (AFSC)

AFSC is focusing on system change – longer arc

- 55 programs
 - 20 international
 - 35 in the U.S.
 - One in the Northwest – Project Voice Oregon

New strategic plan

- Broad program area: An Economy that Works for People and Earth
 - Two state legislative programs – removing barriers to accessing benefits
 - Ending waiting periods, work requirements, time limits, eligibility redeterminations
 - One housing program – hotline for help during COVID-19 crisis
 - Food and farming programs – New Mexico program buying local produce, purchasing supplies for local, sustainable, small-scale farms

Recent nationwide action items

- Contributions to the immediate assistance actions in the pandemic
- Calling for 10% reduction in military spending with funds converted to human needs programs.

Afsc.org – I recommend the **blog** link to follow current issues

FRIENDS COMMITTEE ON NATIONAL LEGISLATION (FCNL)

Building relationships with federal legislators

- Registered lobbyists in Washington, D.C.
- Advocacy teams around the country (150+)
- Policy statement and priorities set in consultative process with Meetings.

Issues list includes Economic Justice

- Poverty
- Budget priorities
- Income inequality – including racism and poverty
- Health Care

Recent action items:

- Increase SNAP benefits (food stamps)
- Cut defense budget by 10% -- shift funds to more urgent priorities
- Support working families – expand tax credits and lift millions out of poverty

Fcnl.org – click on “action” for links to contact your Senators and Representatives

QUAKER VOICE ON WASHINGTON PUBLIC POLICY

Focuses on state-level legislation, including budget priorities

- One part-time lobbyist
- Annual meeting to set priorities
- Quaker Lobby Day during the legislative session
- Action alerts by email
- Works often in coalition

Three working groups

- Criminal Justice
- Environmental Stewardship
- Economic Justice

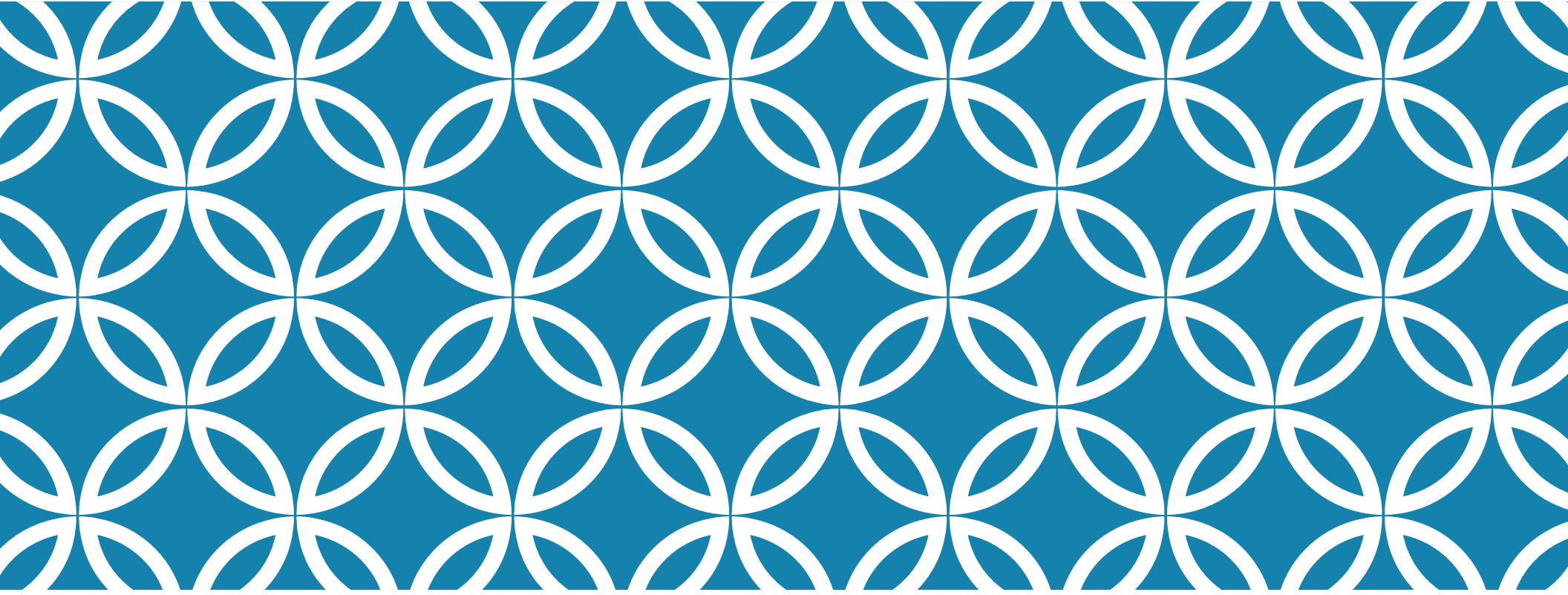
Economic Justice group has focused on

- Affordable housing and rental justice
- Maintaining and expanding the safety net
- Starting to consider education and health care

These slides will be posted in the Economic Justice section of the Quaker Voice web site:

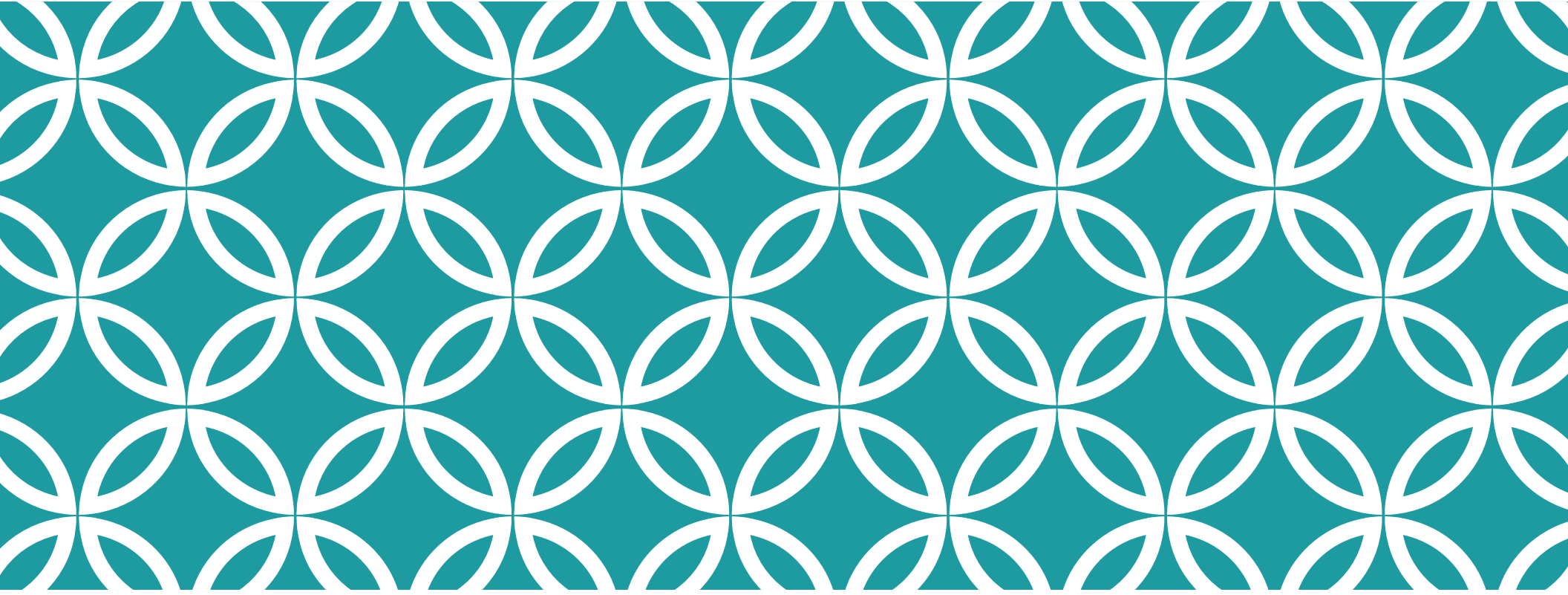
<https://www.quakervoicewa.org/>.

YOUR IDEAS ABOUT WHAT TO DO

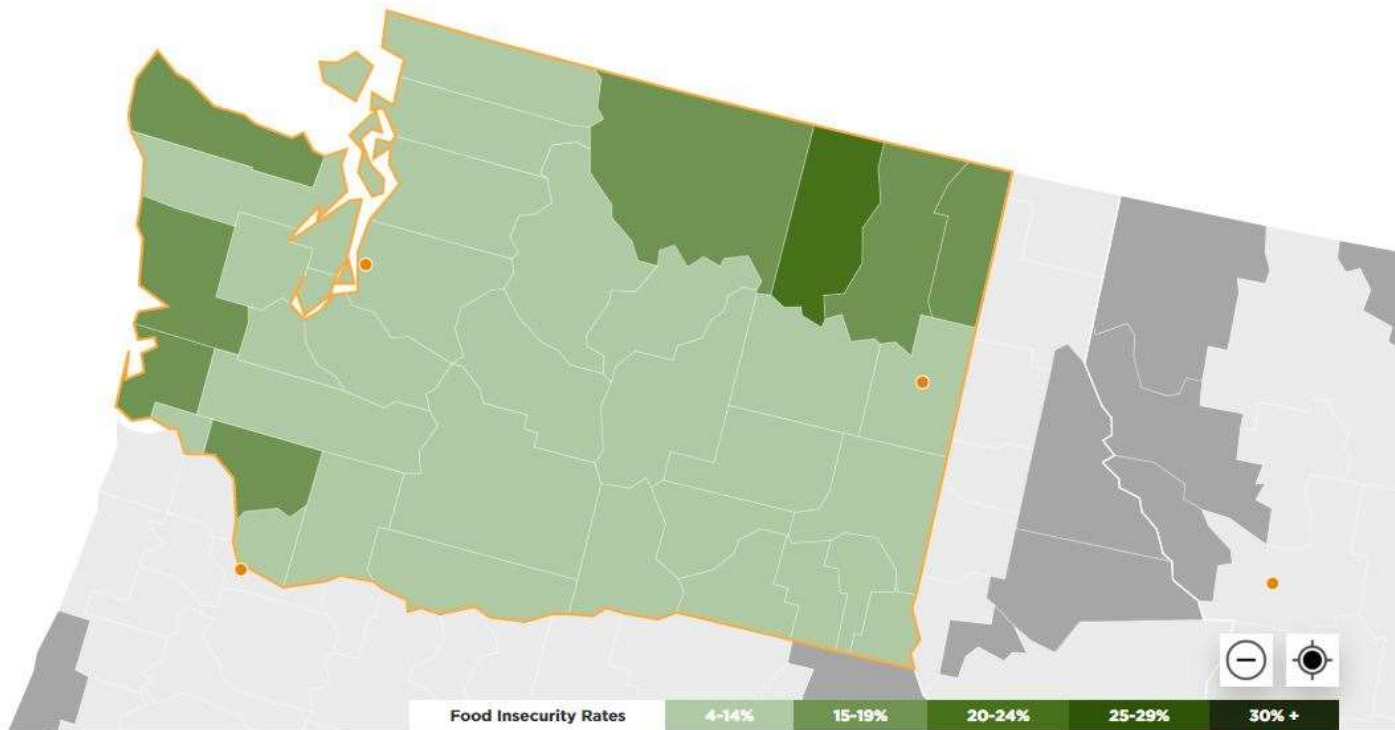


CLOSING WORSHIP





SUPPLEMENTARY SLIDES |



2018 Overall County Food Insecurity in Washington



FOOD INSECURE PEOPLE IN WASHINGTON FOOD INSECURITY RATE IN WASHINGTON ESTIMATED PROGRAM ELIGIBILITY AMONG FOOD INSECURE PEOPLE IN WASHINGTON

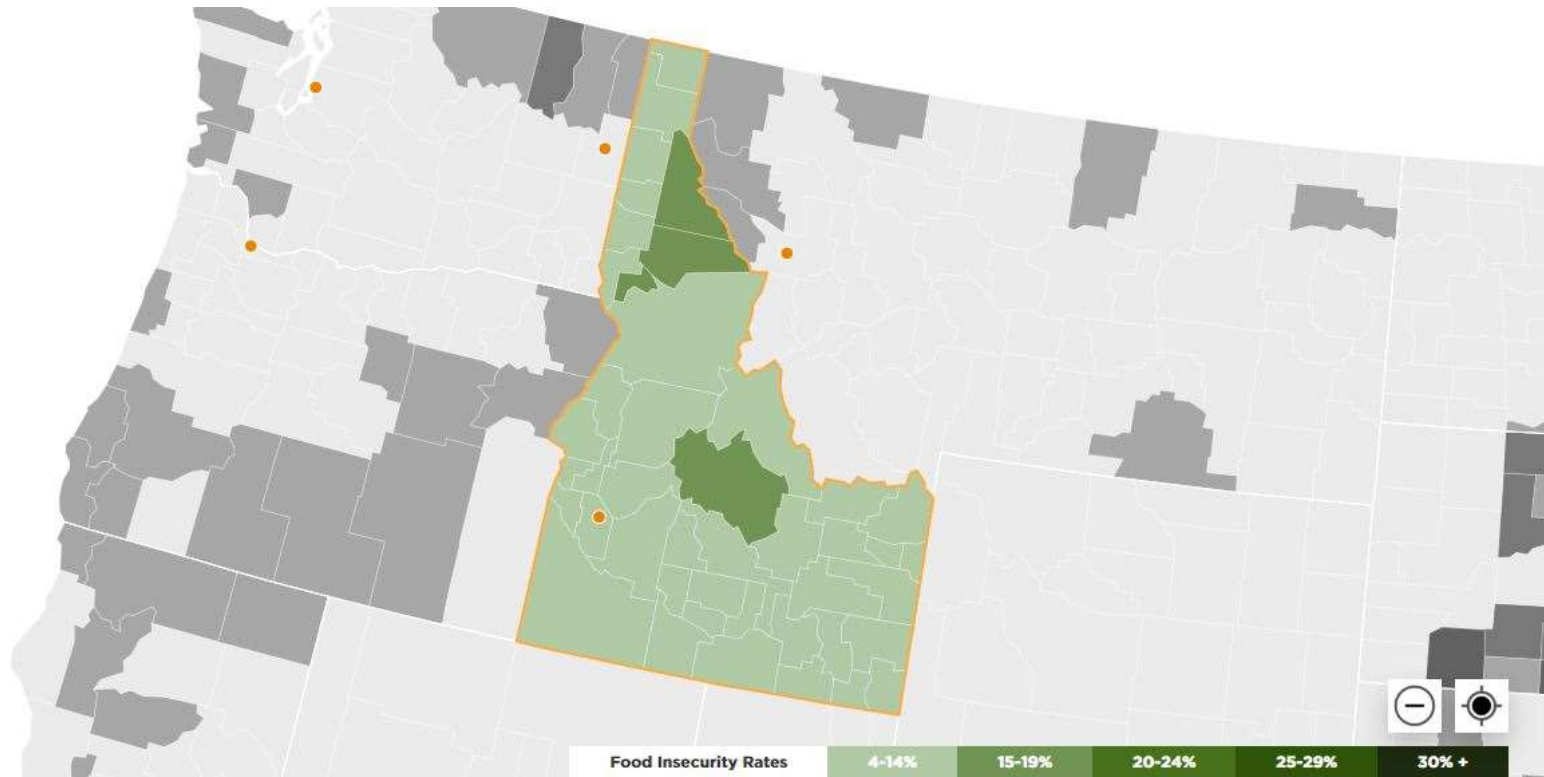
804,080



34%	Above SNAP, Other Nutrition Programs threshold of 200% poverty
66%	Below SNAP, Other Nutrition Programs threshold 200% poverty

AVERAGE MEAL COST
\$3.22

ANNUAL FOOD BUDGET SHORTFALL
\$438,026,000



2018 Overall County Food Insecurity in Idaho



FOOD INSECURE PEOPLE IN IDAHO

189,970



FOOD INSECURITY RATE IN IDAHO



ESTIMATED PROGRAM ELIGIBILITY AMONG FOOD INSECURE PEOPLE IN IDAHO



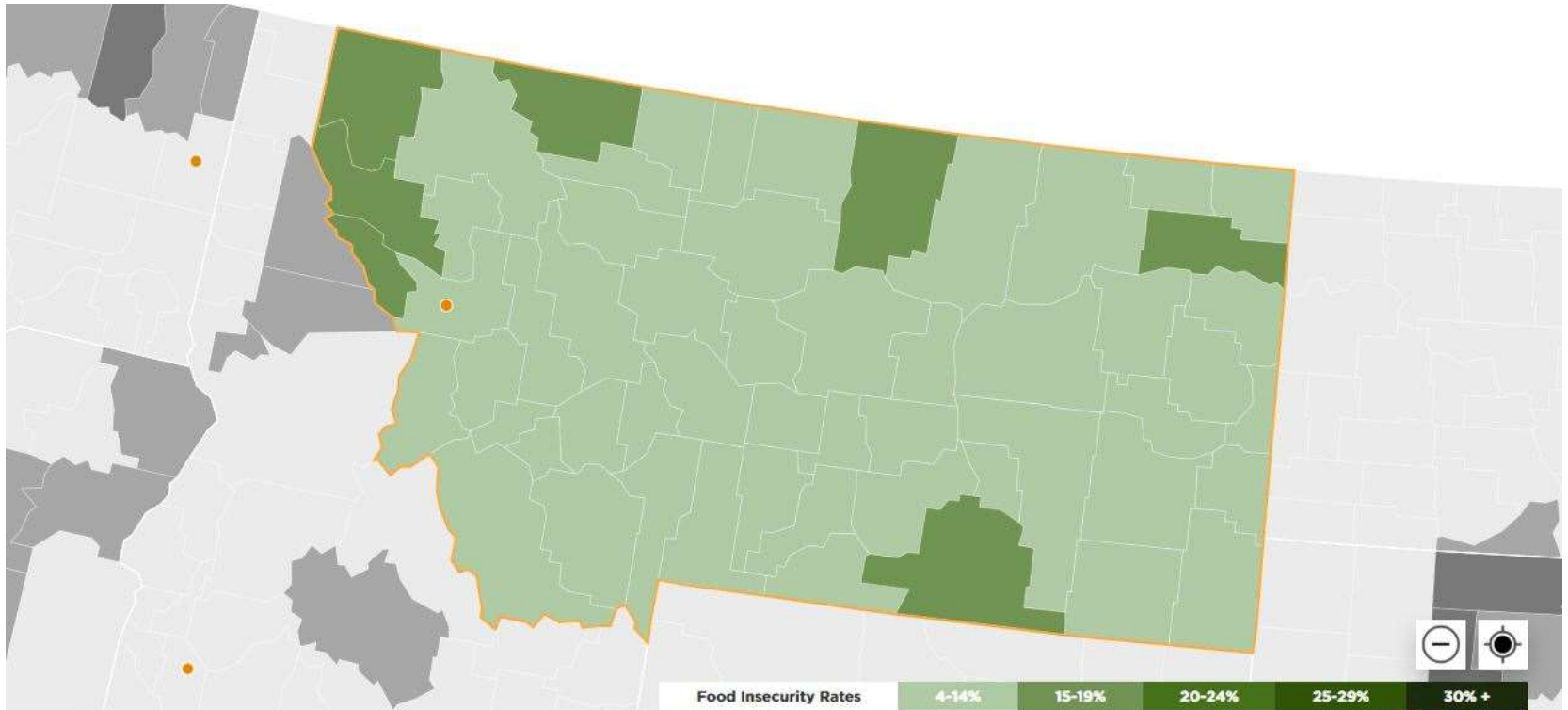
32%	Above Other Nutrition Program threshold of 185% poverty
19%	Between 130%-185% poverty
49%	Below SNAP threshold 130% poverty




AVERAGE MEAL COST

\$3.04

ANNUAL FOOD BUDGET SHORTFALL

\$97,790,000



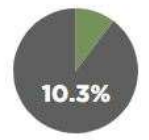
2018 Overall County Food Insecurity in Montana




FOOD INSECURE PEOPLE IN MONTANA

109,150



FOOD INSECURITY RATE IN MONTANA



ESTIMATED PROGRAM ELIGIBILITY AMONG FOOD INSECURE PEOPLE IN MONTANA

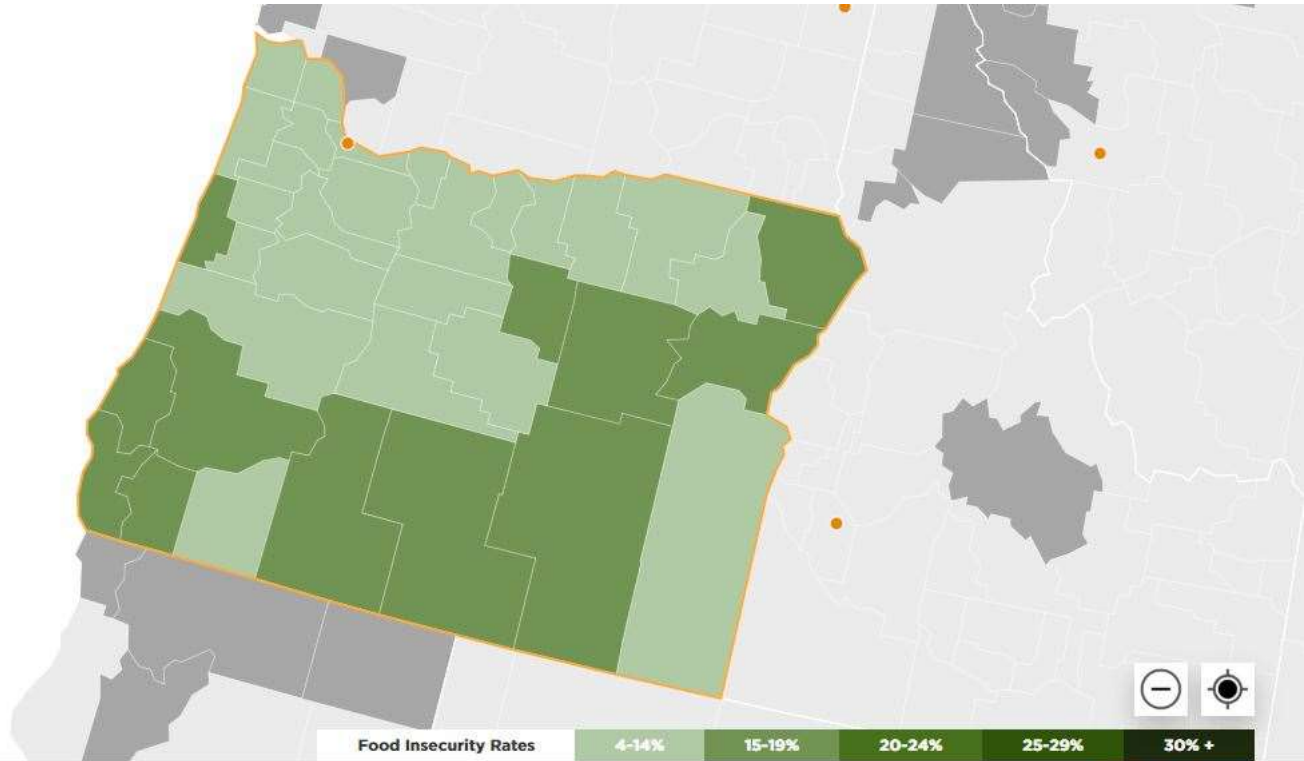


AVERAGE MEAL COST

\$3.02

ANNUAL FOOD BUDGET SHORTFALL

\$55.846.000



2018 Overall County Food Insecurity in Oregon



FOOD INSECURE PEOPLE IN OREGON

498,730



FOOD INSECURITY RATE IN OREGON



ESTIMATED PROGRAM ELIGIBILITY AMONG FOOD INSECURE PEOPLE IN OREGON



AVERAGE MEAL COST

\$3.13

ANNUAL FOOD BUDGET SHORTFALL

\$264,260,000